

CHASSIS PLANS

CPCSD1-15



- **Rack Mount—Only 1RU (1.75")**
- **Keyboard w/ Trackball or Touch Pad**
- **Samsung 15" TFT LCD**
- **1024 X 768 Max Resolution**
- **16.7Million Display Colors**
- **Lockout Slides to Prevent Movement**
- **Captive Thumb Screws**
- **Ideal for Space Limited Applications**

The CPCSD1-15 is a high performance 1U clamshell 15" LCD display/keyboard drawer. The display is a high quality Samsung 15" TFT LCD with a maximum resolution of 1024 X 768. Included is a high quality low profile 83 key keyboard with integrated track ball or touch pad. The display folds forward over the keyboard and tilts up for use. The drawer is held closed by two captive thumb screws. Lock out ball bearing slides are included along with mounting brackets to allow installation in any standard 19" rack, 24" to 37" deep.

The display offers 300:1 contrast ratio and a brightness of 250cd/m². The response time is a fast 12.5mS and the viewing angle is 115° vertical and 140° horizontal. Video input is via a standard high density DB15 and the keyboard is available with either PS/2 or USB connections.

A variety of KVM switches can be fitted to the rear to allow this one display/keyboard to control up to 16 computers.

As with all Chassis Plans products, a wide variety of custom options are available including paint color, customer logo, touch screens, contrast filters, transmissive daylight modification, and hard coated vandal shields. Lightweight aluminum versions are available for transit case installation.



Dimensions

19" (wide) x 1.75" (high)
Mounting for 24" to 37" rack depth

Display

15" SAMSUNG TFT/LCD Panel
Display Resolution: XGA 1024x768
Display Colors: 16.7 Million
Display area: 304.1mm x 228.1mm (15" diagonal)
Contrast Ratio: 300:1 typical
Brightness: 250 cd/m² typical
Pixel Pitch: 0.297mm x 0.297mm
Viewing Angle (U/D/L/R): 55/60/70/70 deg
Response Time (mS @ 25°C): <12.5
Connector: 15-pin high density DB-15
Power Management: EPA Energy Star, VESA DPMS

Display Resolution Modes

VESA VGA/SVGA/XGA
Recommended Resolution: 1024x768 @ 60Hz
640 x 350 @ 60Hz
640 x 400 @ 70Hz
Mac VGA
640 x 480 @ 60,72,75Hz
Mac SVGA
720 x 400 @ 70Hz
Mac XGA
800 x 600 @ 56,60,72,75Hz
1024 x 768 @ 60,70,75Hz

On Screen Display

Adjustment

Brightness
Contrast
Clock
Phase
Auto Adjust

Color Temp

6500K/9300K/User

Setup

Image (Hor Position, Vert Position, Gamma
OSD (Language, Color, Position, Duration, Lock)
Mode Recall
Backlight
Auto Sleep

Keyboard

PS/2 or USB Connection
Tactile Keystroke
5,000,000 lifecycles per switch
Power: +5 DC @ 100 mA max
Synchronous 8-bit data

Trackball Option

Integrated in keyboard
16mm ball
PS/2 Compatible
Various resolution from 20—6400 dpi
Tracking speed 500 mm/sec
Two "mouse" keys



Touch Pad Option

Integrated in Keyboard
Three 'mouse' keys

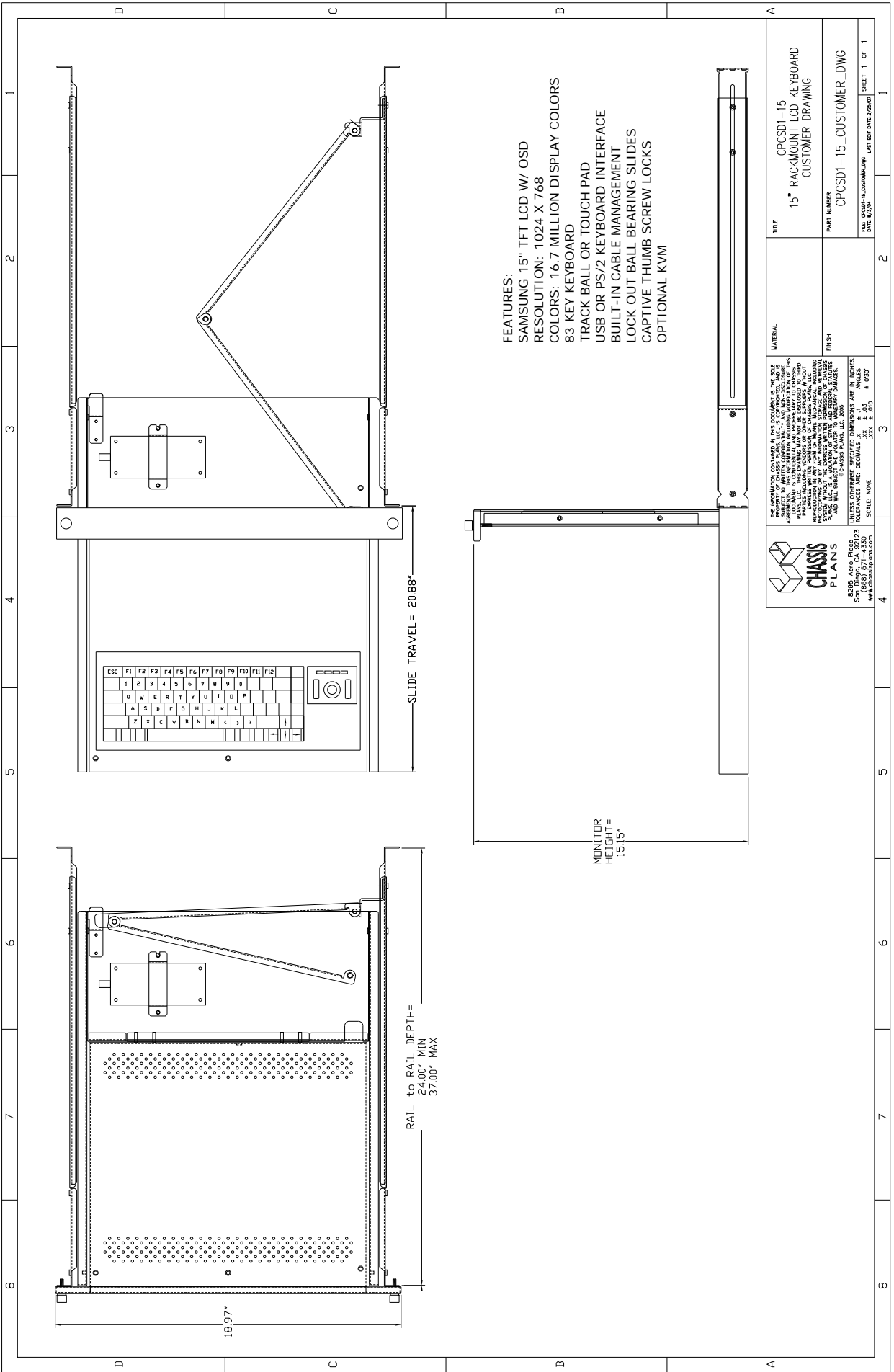


Agency Approvals

FCC-B, EMI/EMC/CE/BSMI

Ordering Guide

Model	Pointing Device	Keyboard Interface
CPCSD1-15-UTB	Trackball	USB
CPCSD1-15-UTP	Touch Pad	USB
CPCSD1-15-PTB	Trackball	PS/2
CPCSD1-15-PTP	Touch Pad	PS/2



- FEATURES:**
- SAMSUNG 15" TFT LCD W/ OSD
 - RESOLUTION: 1024 X 768
 - COLORS: 16.7 MILLION DISPLAY COLORS
 - 83 KEY KEYBOARD
 - TRACK BALL OR TOUCH PAD
 - USB OR PS/2 KEYBOARD INTERFACE
 - BUILT-IN CABLE MANAGEMENT
 - LOCK OUT BALL BEARING SLIDES
 - CAPTIVE THUMB SCREW LOCKS
 - OPTIONAL KVM

<p>THE INFORMATION CONTAINED IN THIS DOCUMENT IS THE SOLE PROPERTY OF CHASSIS PLANS, INC. IT IS TO BE USED ONLY FOR THE PROJECT TO WHICH IT APPLIES. ANY REUSE OR MODIFICATION OF THIS DOCUMENT IS PROHIBITED. CHASSIS PLANS, INC. IS NOT RESPONSIBLE FOR THE CONTENTS OF ANY OTHER DOCUMENTS OR MATERIALS REFERENCED IN THIS DOCUMENT. CHASSIS PLANS, INC. IS NOT RESPONSIBLE FOR THE REPRODUCTION OR DISTRIBUTION OF THIS DOCUMENT. CHASSIS PLANS, INC. IS NOT RESPONSIBLE FOR THE REPRODUCTION OR DISTRIBUTION OF THIS DOCUMENT. CHASSIS PLANS, INC. IS NOT RESPONSIBLE FOR THE REPRODUCTION OR DISTRIBUTION OF THIS DOCUMENT.</p>	
TITLE	CPCSD1-15 15" RACKMOUNT LCD KEYBOARD CUSTOMER DRAWING
MATERIAL	
PART NUMBER	CPCSD1-15_CUSTOMER_DWG
FINISH	
UNLESS OTHERWISE SPECIFIED DIMENSIONS ARE IN INCHES.	
TOLERANCES ARE: DECIMALS .XX ± .03	
ANGLES .030	
SCALE: NONE	
DATE: 07/14/2009	
FILE: P0201-15_CUSTOM_DWG	
DATE: 07/14/2009	
SHEET 1 OF 1	


CHASSIS PLANS
 8285 Arcs Place
 Southfield, MI 48033
 (313) 571-4332
 www.chassisplans.com